



SAORI

PRODUCTS & RESOURCES



手織機むぎ

Contents

INTRODUCTION

About SAORI 6

LOOMS

Design Concepts 10
SAORI CH60 11
SAORI CH60A-2 12
SAORI SX60 13
SAORI WX60 14
SAORI Piccolo40 15
SAORI WX90 16
Frequently Asked Questions 17

ACCESSORIES

SAORI Yarn Shelf 20
Accessories for SAORI CH60/SX60/WX60 21
Accessories for SAORI Piccolo40 22
Accessories for SAORI WX90 23
Weaving Accessories 24
Accessories for Different Needs 25
Overview of SAORI Warping Methods 27
Beaming and Threading Options 28
Warping and Threading Accessories 29
Supplemental Accessories 31
SAORI Ready-made Warps 32

YARN

Concept of SAORI Yarn 34
Classic & Specialty SAORI Yarn 35
Overview of Classic Yarn 36
Frequently Asked Questions 39
Cotton 40
Jute 42
Wool 43
Lambswool 44
Silk & Linen 46
Organic Cotton & Alpaca/Camel 47
Cashmere 48
How to Finish Your SAORI Cloth 49

RESOURCES

Books 52
Concept of SAORI Clothing Design 54
Encounter with a Gift from God 55
Company & Community 56
SAORI Global 57
Classes 58
Frequently Asked Questions 59

Inspiring a global community to discover, nurture and respect the endless, creative potential that lives within and connects us all



All of our SAORI products are made with expert craftsmanship and the utmost care in our manufacturing facility in Izumi, Osaka, Japan. Due to the nature of the materials and production methods involved, including handmade processes, each product may vary slightly.

The availability and specifications of any and all products are subject to change without prior notice.



INTRODUCTION



SAORI is a movement and integrated practice of creative and personal realization founded in 1969 by Misao Jo and still continued by her family in Osaka, Japan. It is rooted in the activity of free-flowing, uninhibited hand weaving and the core philosophy that we are all born with unique sensibilities and the power to create. SAORI is not only a practice of connecting deeply with one's own creative and authentic self, but it is also a practice of connecting deeply with others. By discovering and nurturing our individuality yet shared humanity and ability

to express ourselves, we cultivate awareness and compassion within ourselves and our global community.

When she began weaving at the age of 57, Misao Jo originally used the term *SAORI* to identify her own weaving, *sao* being a contraction of her name and *ori* meaning 'weaving' in Japanese. But later as she deepened her own practice of weaving and realized that it was much more than a personal hobby and had a profound capacity to impact the lives of other individuals, she extended the significance of the name SAORI beyond herself and connected it to the Japanese word *sai* (差異), which means 'difference.' There are many words that can mean 'difference,' but this word specifically does not mean difference between objects in comparison, but rather difference amongst objects, each with their own dignity.

Life is where we come in order to discover our true selves.
—Misao Jo

As she experienced personally and the experiences of countless others further illustrated, Misao found that the most accessible and impactful way for all individuals to awaken their hidden powers of creativity and cultivate their authentic selves was through a sustained practice of hand weaving. Not just any kind of hand weaving, but remarkably uncomplicated hand weaving that encourages a natural state of mindfulness and unrestrained possibilities to the question, what if? And so, Misao and her family worked together to build a tool as revolutionary and human-centered as the mindset it was designed to facilitate: the SAORI loom.

Through their carefully considered design, SAORI looms and accessories make an unparalleled flow of weaving possible for individuals of all ages, previous experiences, and physical and intellectual capabilities. Within a matter of minutes and lasting for a lifetime, one can sit down at a SAORI loom and feel the ease, joy and satisfaction of being able to express oneself. Paired with



dedication to open, generous and inspired thinking, SAORI looms become more than simply tools for creative expression but also tools for self-discovery and self-innovation.

Plain weaving appeals to new weavers due to its simplicity and to long-time weavers due to its sophistication.



In SAORI, practice does not make perfect—or imperfect. Practicing SAORI is a continuous journey of being present to and learning deeply about who we are, genuinely and free from judgments and expectations that naturally develop from within ourselves and from our external world. By discovering and nurturing our individuality, we cultivate awareness and compassion within ourselves but also towards others. Through weaving, making and wearing our own one-of-a-kind clothes, and generously sharing together, we realize our uniqueness

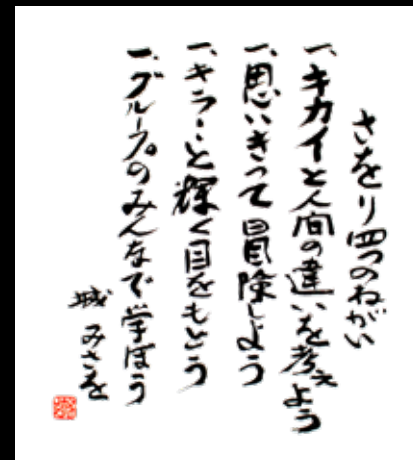
yet collective humanity and ability to express ourselves. We connect to the boundless, creative potential that lives within each and every human being and unites our global community.

Misao wove almost every day from the time she first learned at age 57 until she was 98. She devoted herself to helping others discover their authentic, creative selves and was commended by the Japanese government twice for her contribution to the public through SAORI, once in 1990 by the Minister of Health and Welfare and again in 1992 by the Prime Minister of Japan. In 2018, Misao passed away peacefully at the age of 104, but her spirit and legacy live on through her family and thousands of individuals and communities practicing SAORI all around the world.

Four slogans of SAORI

The following slogans represent the core philosophy of SAORI. They guide those practicing SAORI not only while weaving but also in the way they conduct their lives as a whole.

1. Consider the differences between a machine and human being.
2. Be bold and adventurous.
3. Look out through eyes that shine.
4. Inspire one another, and everyone in the community.



Original Japanese calligraphy by Misao Jo



LOOMS



Made in Japan Specifically for SAORI



When creating the very first, one-of-a-kind SAORI loom, Misao and her family had one primary goal: to create a loom that would be as easy to use as possible and best suited for all individuals to explore their creativity through free-flowing, uninhibited hand weaving.

Now for more than 50 years as the movement and practice have continued to develop, the Jo family has worked hard to maintain the ease of use, accessibility and quality of all SAORI looms and weaving accessories to best support the long-lasting

practices of SAORI by individuals and communities in Japan and all around the world. Since 1969, SAORI looms and products have integrated feedback from the entire SAORI community as part of an evolving and collaborative design process.

Design Concepts



► Easy and Fun to Use

SAORI looms are designed specifically to be best-suited for the practice of SAORI, so that anyone can start and continue weaving after learning a few, simple steps. No matter what your age, previous experience and natural abilities are, you can easily and comfortably enjoy SAORI for a lifetime.

► Accessible and Versatile

A wide variety of accessories make SAORI looms truly accessible to people with different needs and creative interests. SAORI is possible for everyone, regardless of whether one uses a wheelchair or has difficulty using both hands or perhaps wants to skip the warping process entirely and finds most creative fulfillment in weaving itself.

► Made in Japan

All SAORI products are made of high-quality materials with expert craftsmanship and the utmost care in the manufacturing facility in Izumi, Osaka. Made with beautiful and durable Japanese cherry wood, each loom part may have different grain, and the colour of the loom turns deeper and richer over time while the practice and bond between the weaver and the loom gets deeper and stronger. They are built to last and also support the sustainability of other local family-owned businesses in Japan.



SAORI CH60

Classic Model



The SAORI CH60 is the designer's choice for its elegant style, compact design, ease of use and maximum comfort provided while weaving.

Features:

- ◆ Durable and beautiful body made of high-quality Japanese cherry wood.
- ◆ Built-in bobbin winder and shelf.
- ◆ The warp control lever lets you advance the warp while remaining seated.
- ◆ Wire heddles have larger holes/eyes to make threading easier.
- ◆ A SAORI Ready-made Warp is set up on the loom so that you can start weaving once you finish the assembly.

Dimensions:

- ◆ Width: 83cm (32.7")
- ◆ Depth: 61cm (24")
- ◆ Height: 99cm (39")
- ◆ Weight: 16kg (35.3lb)
- ◆ Weaving Width: 60cm (23")

Included Accessories:

- 1 Reed (5 dents/cm = 12 dents/inch); 2 Harnesses (incl. 420 wire heddles);
- 1 Boat Shuttle (medium size); 15 Bobbins; 1 Bobbin Winder (built-in);
- 1 Warp Control Lever (built-in); 1 Reed Hook; 1 Heddle Hook; 1 Clipping Rod with Cords;
- 1 Tying Rod with Cords; 1 Ready-made Warp (150 threads x 6m/6.5yds)



◀ Original Wire Heddles

The wire heddles featured on SAORI looms have larger holes/eyes compared to regular ones. This makes the threading process a lot easier!



Built-In Bobbin Winder ▶

The bobbin winder already built into each SAORI loom is very useful! With it, you can wind and spin yarns and even make rope!



◀ Unique Inside Set

The unique feature of the Inside Set on all SAORI looms allows you to remove one piece from the loom while it is still in progress and put another piece in its place. In this way, you can continue several pieces at the same time without purchasing another loom. Extra Inside Sets are also very useful when multiple people would like to use the same loom to work on different pieces simultaneously. *See p.19 for more details about the unique SAORI Inside Set.

SAORI CH60A-2

All-Accessible Model



The SAORI CH60A-2 is wheelchair accessible and height-adjustable. It has all the features of the SAORI CH60; however, the wooden pedal beam is replaced by a flat adjustable metal brace. This lets a weaver in a wheelchair roll in close to the loom. The brace also has 5 height settings, allowing you to raise the loom up to 12.5cm (4.9") from the floor. This is helpful for taller weavers as well! By adding optional accessories such as the Shuttle Shelf and Hand Switcher, you can upgrade the SAORI CH60A-2 into a loom that is universally accessible by people with all different needs.

*The photo on the left shows the SAORI CH60A-2 with the Shuttle Shelf and Hand Switcher (sold separately).



You can move the shuttle with one finger or even with your feet, using the Shuttle with Pegs on the SAORI 60CHA-2 with the Shuttle Shelf and the Hand Switcher installed. (See p.24 for more information.)

Dimensions:

- ◆ Width: 83cm (32.7")
- ◆ Depth: 61cm (24")
- ◆ Height: 98cm (38") - 110.5cm (43.5")
- ◆ Weight: 17.7kg (39 lb.)
- ◆ Weaving Width: 60cm (23")

Included Accessories:

- 1 Reed (5 dents/cm = 12 dents/inch);
- 1 Boat Shuttle (medium size); 2 Harnesses (incl. 420 wire heddles); 15 Bobbins; 1 Bobbin Winder (built-in);
- 1 Warp Control Pedal (built-in); 1 Reed Hook; 1 Heddle Hook;
- 1 Clipping Rod with Cords; 1 Tying Rods with Cords;
- 1 Metal Pedal Beam for Wheelchair-Accessibility;
- 1 Ready-made Warp (150 threads x 6m/6.5yds)



SAORI SX60

Foldable Model



The SAORI SX60, with its combination wood and metal frame, is our longest-selling foldable model. Easily fold and unfold the loom for transport and storage without any additional assembly. It has excellent durability and stability while being lightweight and versatile for portability and use in different environments.

Features:

- ◆ Durable body made of high-quality Japanese cherry wood and metal.
- ◆ Folds easily for transport and storage.
- ◆ Built-in bobbin winder & shelf.
- ◆ The warp control pedal lets you advance the warp while remaining seated.
- ◆ Wire heddles have larger holes/eyes to make threading easier.
- ◆ A SAORI Ready-made Warp is set up on the loom so that you can start weaving once you finish the assembly.

Dimensions:

- ◆ Width: 77cm (30.3")
- ◆ Depth: 70cm (27") / 23cm (9") when folded
- ◆ Height: 100cm (39.38") / 108cm (42") when folded
- ◆ Weight: 15kg (33.1 lb.)
- ◆ Weaving Width: 60cm (23")

Included Accessories:

- 1 Reed (5 dents/cm = 12 dents/inch);
- 2 Harnesses (incl. 420 wire heddles); 1 Boat Shuttle (medium size);
- 15 Bobbins; 1 Bobbin Winder (built-in); 1 Warp Control Pedal (built-in);
- 1 Reed Hook; 1 Heddle Hook; 1 Clipping Rod with Cords; 1 Tying Rod with Cords;
- 1 Ready-made Warp (150 threads x 6m/6.5yds)



SAORI SX60H



SAORI SX60

Available in two heights

The SAORI SX60H has longer metal legs, which raise the position of the breast beam 70cm (about 27 inches) away from the floor. This is 5cm (about 2 inches) higher than the standard SX60 model, making the SX60H model comfortable for taller weavers. The SX60H model also has the capability to set another warp roller so you can enjoy double beam weaving by purchasing an extra warp roller.

SAORI WX60

Foldable Model



The SAORI WX60, an updated model of the SAORI SX60, has an all-wood frame and is also foldable for transport and storage. The WX60 model is popular for its elegant design while maintaining the same features of the long-selling SX60 model.

Features:

- ◆ High quality Japanese cherry wood frame makes a very stylish foldable loom.
- ◆ The warp is controlled by a resistance brake instead of the wire tension brake featured on the SAORI SX60.
- ◆ Deepest weaving area, in comparison to other SAORI looms available.
- ◆ 1kg lighter than the SAORI SX60.



Dimensions:

- ◆ Width: 76cm (30")
- ◆ Depth: 76cm (30") / 30cm (11.8") when folded
- ◆ Height: 99cm (39") / 106cm (41.7") when folded
- ◆ Weight: 13.5kg (29.8 lb.)
- ◆ Weaving Width: 60cm (23")

Included Accessories:

- 1 Reed (5 dents/cm = 12 dents/inch);
- 2 Harnesses (incl. 420 wire heddles); 1 Boat Shuttle (medium size);
- 15 Bobbins; 1 Bobbin Winder (built-in); 1 Warp Control Pedal (built-in);
- 1 Reed Hook; 1 Heddle Hook; 1 Clipping Rod with Cords; 1 Tying Rod with Cords;
- 1 Ready-made Warp (150 threads x 6m/6.5yds)

WX60 is available with two packing options

Partly Assembled package:

The loom arrives partly assembled, and the included Ready-made Warp (150 threads x 6m) is also threaded. The loom is ready for weaving after the rest of the assembly process is done.

Unassembled Package:

The loom arrives unassembled to make its packing size smaller. The included Ready-made Warp (150 threads x 6m) is not pre-threaded because the harnesses are also unassembled. The unassembled WX60 comes with the supplemental assembly instructions. After assembling the loom, the Ready-made Warp needs to be set up before weaving. Refer to the book "SAORI: Self-Innovation through Free Weaving" for threading instructions.

SAORI Piccolo40

Foldable and Height Adjustable



SAORI Piccolo 40's lightweight, metal frame, which can be set at two heights and folds easily for transport and storage, was developed for SAORI practitioners to weave with their children/grand children, or to travel with as their second loom. This loom was designed to be best used with the Ready-made Warps.

Features:

- ◆ Lightweight but strong body with a beautiful, chrome-plated metal frame.
- ◆ Folds easily for transport and storage.
- ◆ Has two height settings.
- ◆ Built-in bobbin winder and shelf.
- ◆ The warp control lever lets you advance the warp while remaining seated.
- ◆ Wire heddles have larger holes/eyes to make threading easier.
- ◆ A Ready-made Warp is set up on the loom so that you can start weaving once you finish the assembly.

Included Accessories:

- 1 Reed (5 dents/cm = 12 dents/inch); 2 Harnesses (incl. 200 wire heddles); 1 Boat Shuttle (medium size); 15 Bobbins;
- 1 Bobbin Winder (built-in); 1 Warp Control Lever (built-in);
- 1 Reed Hook; 1 Heddle Hook; 1 Tying Rod with Cords;
- 1 Clipping Rod with Cords; 1 Ready-made Warp (100 threads x 6m/6.5yds)

Dimensions:

- ◆ Width: 61cm (24")
- ◆ Depth: 60cm (23.6") / 74cm (29.1") when raised
25cm (9.8") when folded
- ◆ Height: 86cm (33.9") / 95cm (37.4") when raised
98cm (38.6") - 107cm (42.1") when folded
- ◆ Weight: 7kg (15.4 lb.)
- ◆ Weaving Width: 40cm (15.7")

Two height settings ▶

The position of the breast beam is 68cm from the floor when the SAORI Piccolo40 is fully raised, only 1cm lower than the SAORI SX60. Both children and adults can weave comfortably on this model.





SAORI WX90 was developed as the second loom for long-term SAORI practitioners who would like to explore a new possibility on a loom with more weaving width. This model maintains an elegance and features similar to those of the popular SAORI WX60.



Left: SAORI WX60
Right: SAORI WX90



The Warp Control Pedal on the WX90 loom has a hand lever attached and this helps the weaver to control the tension on the warp easily.



Dimensions:

- ◆ Width: 99cm (35.4")
- ◆ Depth: 76cm (30") / 29cm (11.4") when folded
- ◆ Height: 98.5cm (39") / 107cm (42") when folded
- ◆ Weight: 16kg (35.3 lb.)
- ◆ Weaving Width: 90cm (35.4")

Included Accessories:

- 1 reed (5 dents/cm = 12 dents/inch);
- 2 harnesses (incl. 630 wire heddles);
- 1 boat shuttle (medium size); 15 bobbins;
- 1 bobbin winder (built-in); 1 warp control pedal (built-in);
- 1 reed hook; 1 heddle hook; 1 clipping tying rod with cords;
- 1 tying rod with cords

Q. Why are the 60 & 40 Series the primary looms in SAORI?

We recommend the SAORI 60 & 40 Series as the primary looms and the 90 series as the secondary loom for extended possibilities. The 60 & 40 looms are more versatile ergonomically and functionally. Many SAORI Weavers feel the 60 & 40 Series match their body sizes and let them feel an unparalleled flow while weaving. Cloth width between 20cm and 60cm is generally considered to be best suited for making SAORI clothes. To extend the size of clothing, we usually recommend weaving longer and sewing multiple panels together to add sizes rather than creating a bigger single panel with a wider cloth. This will enhance your freedom and enjoyment of SAORI clothing design.

Q. What makes SAORI looms special and different from other looms?

The simple answer is twofold: accessibility and flow. All SAORI looms and accessories have been designed with one primary goal: to be as easy and comfortable to use as possible and best suited for exploring one's creativity. This purpose is embedded in each and every SAORI loom. Through their design, SAORI looms and weaving accessories make an unparalleled flow of weaving possible for anyone, regardless of age, previous experience, and physical and intellectual capability. Every design aspect carefully considers the human body and experience so that within a matter of minutes and lasting for a span of hours on end, one can sit down at a SAORI loom and feel the ease, joy and satisfaction of being able to express oneself. When using a SAORI loom, the weaver finds a natural rhythm with the loom, becoming fully immersed in a state of flow and becoming one with the cloth itself.

Q. Why SAORI looms have only two harnesses ?

While traditional floor looms usually have a minimum of four harnesses, SAORI looms only have two—they are unconventional. In fact, SAORI is about more than weaving and should not be compared to the activity of weaving on other, conventional looms. SAORI is about discovering and exploring one's true, creative self and developing a deep practice and conversation with oneself and others. And, Misao Jo found that the most accessible and impactful way for people to begin and sustain that practice was through free-flowing, uninhibited hand weaving. By focusing on the most basic mechanics of weaving, achieved with two harnesses instead of multiple harnesses, but still benefiting from the versatility of a floor loom instead of a purely hand-operated loom, individuals can find a natural state of flow that encourages them to express themselves freely and weave what only human hands and spirit can. Believe it or not, but seeming limitations actually benefit human creativity and inspire innovation. In SAORI, we often say, "Plain weaving appeals to new weavers due to its simplicity and to long-time weavers due to its sophistication."

Q. What are the differences between each model?

Refer to the comparison chart below to see all available features and options. Wooden frame models are popular for their classic style, while metal frame models are popular for their durability, especially if transported between various locations and used outdoors. The designer's favorite, which is starred, is the SAORI CH60 for its compact design, ease of use and maximum comfort provided while weaving.

Features \ Model	CH60★	SX60	WX60	Piccolo40	WX90
Weaving Width	60cm	60cm	60cm	40cm	90cm
Frame Material	Wood	Metal	Wood	Metal	Wood
Foldable	-	✓	✓	✓	✓
Multiple Height Settings	5 Settings ¹	-	-	2 Settings	-
Optional Height Extender	5cm ²	- ³	5cm or 10cm	-	5cm or 10cm
Optional Accessories for Different Needs	✓	✓	✓	-	-

★ Designer's Choice

¹ Available only with the optional metal Flat Pedal Beam for Wheelchair attached

² Leg Attachment for CH60

³ Choose SX60H for a taller model (SX60H is 5cm taller than SX60)

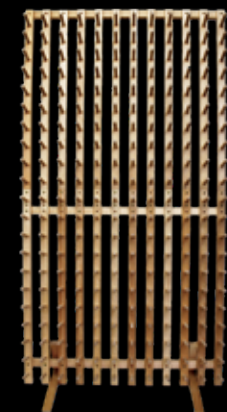


ACCESSORIES

SAORI Yarn Shelf



Designed specially for displaying SAORI cone yarns in a beautiful and practical way. We have two kinds of shelves for different needs. They can be placed against the wall or in the middle of the room as a screen.



◀ Yarn Shelf 252

<Dimensions>
Height: 183cm
Width: 98cm
Depth: 40cm
Weight: 16.8kg

This shelf can display 252 SAORI cone yarns.

It should be secured against the wall at the top. When all spaces are used to display 252 cones, the shelf with yarns weighs a total of about 70kg.



At SAORINOMORI, the shelves are placed against the wall. Without being connected or joined, the shelves appear as one beautiful shelf.

Yarn Shelf 132 ▶

<Dimensions>
Height: 140cm (100cm with short legs)
Width: 98.5cm
Depth: 60cm (40cm with short legs)
Weight: 10.2kg

This shelf can display 132 SAORI cone yarns.

It comes with two kinds of leg attachments. The longer attachments raise the shelf 40cm above the floor, making the shelf wheelchair accessible. With the shorter leg attachments, the Yarn Shelf 132 can be placed on the ground as well as on a counter or other furniture.



Optional Accessories for the SAORI CH60/SX60/WX60



Harness
incl. 210 wire heddles



Reed
(2, 3, 4, 5, 7, 8.5, 10 dents/cm)
(5, 7, 10, 12, 17, 21, 25 dents/inch)



Comb Reed
(2, 3 dents/cm)
(5, 7 dents/inch)



Leg Attachment for the SAORI CH60

By attaching these 4 wooden pre-drilled blocks at the bottom of a SAORI CH60, you can raise the loom by 5cm. This attachment is suitable for those who would like to raise the loom slightly but do not need the flexibility of multiple height settings.



Wheels for the SAORI WX60

This set of wheels lets you move the loom around easily, even on carpet. Also compatible with the SAORI WX90.



Height Extender for SAORI WX60

By attaching these 4 metal plates to the wooden frame, you can raise the loom by about 5 cm (2") / 10 cm (4") for taller weavers. Also compatible with the SAORI WX90.



Extra Inside Set

By purchasing an extra Inside Set, you can remove a piece from the loom while it is still in progress and put another piece in its place. Inside Sets are available for all SAORI loom models.

One extra Inside Set contains:

- 2 Harnesses
- 1 Reed
- 1 Paper Pipe
- 1 Tying or Clipping Rod with Cords
- 1 Tying or Clipping Rod

Optional Accessories for the SAORI CH60/SX60/WX60



Tying Rod

Use this rod to tie the warp thread ends before you start to weave.



Clipping Rod

This original SAORI design allows you to clip warp thread ends instead of tying them so that you can more easily and quickly set up a warp for weaving. The size included with all 60 Series models is 55cm / 21.7". The longer rod (59cm / 23.3") can be purchased separately.



Warp Extension Kit

This includes 1 Paper Pipe and 1 Clipping Rod with Cords (55cm). Set this kit onto the warp roller on the loom to make an interchangeable Inside Set or use it to extend and weave the last part of a Ready-made Warp.



Lever Attachment for Warp Control Pedal

This product allows you to move the Warp Control Pedal on your WX60 by hand. It also adds weight assistance to the brake system and gives more tension on the warp. The pedal needs to be drilled when attaching this lever on to your loom.

Optional Accessories for the SAORI Piccolo40



Harness

incl. 100 wire heddles



Reed

(3, 4, 5, 7 dents/cm)
(7, 10, 12, 17 dents/inch)



Tying Rod & Clipping Rod

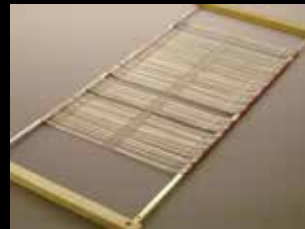
Tying Rod: 39cm / 15.3"
Clipping Rod: 40cm / 15.8"



Warp Extension Kit

This includes 1 Paper Pipe and 1 Clipping Rod with Cords. Set this kit onto the warp roller on the loom to make an interchangeable Inside Set or use it to extend and weave the last part of a Ready-made Warp.

Optional Accessories for the SAORI WX90



Harness

incl. 315 wire heddles



Reed

(2, 3, 4, 5, 7 dents/cm)
(5, 7, 10, 12, 17 dents/inch)



Comb Reed

(2, 3 dents/cm)
(5, 7 dents/inch)



Wheels for the SAORI WX90

This set of wheels lets you move the loom around easily, even on carpet. Also compatible with the SAORI WX60.



Height Extenders for the SAORI WX90

Attach these 4 metal plates to the frame to raise the loom by about 5 cm (2") / 10 cm (4") for taller weavers. Also compatible with the SAORI WX60.



Tying Rod & Clipping Rod for the SAORI WX90

Tying Rod: 87cm / 34.2"
Clipping Rod: 88cm / 34.6"



Warp Extension Kit

This includes 1 Paper Pipe and 1 Clipping Rod with Cords. Set this kit onto the warp roller on the loom to make an interchangeable Inside Set or use it to extend and weave the last part of a Ready-made Warp.



Winding Lever

Setting the optional Winding Lever at the gear of the cloth roller helps you advance the warp on a wide WX90 loom with less effort.



Boat Shuttle

Available sizes:
Small (S), Medium (M), Medium Lightweight, Extra-large (XL)

Well-balanced and easy-to-use shuttles for working with weft threads. To be used with appropriately sized bobbins.



Boat Shuttle (No Spindle)

Simply insert medium-sized bobbins into the slot at the bottom of the shuttle. Very safe and easy to handle.

Boat Shuttles	Length	Width	Height	Weight*
Small	24cm/9.4"	3.5cm/1.4"	2cm/0.8"	60g/2.1oz
Medium	34cm/13.4"	4cm/1.6"	3cm/1.2"	120g/4.2oz
Medium Lightweight	34cm/13.4"	4cm/1.6"	3cm/1.2"	105g/3.7oz
Extra-large	41.5cm/16.3"	5cm/2.0"	4cm/1.6"	140g/4.9oz
No Spindle	29.5cm/11.6"	4.2cm/1.7"	3cm/1.2"	100g/3.5oz

*Approximate average weight as of January 2021. The actual weight of individual products may differ slightly due to the varying nature of the wooden materials used.

Bobbins for Boat Shuttles



Bobbin Sets	Q'ty per Set	Appropriate Boat Shuttle(s)
Short Bobbins	20 pcs	Small
Medium Bobbins	15 pcs	Medium, Medium Lightweight No Spindle, Shuttle with Pegs ^{*3}
Medium Bobbins with Flanges ^{*1}	8 pcs	Medium, Medium Lightweight No Spindle, Shuttle with Pegs
Long Bobbins	10 pcs	Extra-large
Long Bobbins with Flanges	6 pcs	Extra-large
Bobbins for Bobbin Winder Guide ^{*2}	10 pcs	No Spindle Shuttle with Pegs

*1: Flanges are metal end rims. See p.23 for more detail.

*2: See p.23 for more details about the Bobbin Winder Guide

*3: See p.24 for more details about the Shuttle with Pegs.

Stand-alone Bobbin Winder

You can set this bobbin winder onto a surface of your choice. (All SAORI looms come with a built-in bobbin winder.)



Stick Shuttle

Available sizes:
Small (7.5cm/2.95")
Medium (37.5cm/ 14.76")
Large (50cm/19.7")
Extra-large (65cm/25.6")



Cone Stand

For 5, 3, and 2 cones.
Insert an empty cone into each hole from the bottom to hold cones of yarns.



Sakiori Shuttle

Available sizes: Regular and Large
Shuttles designed for Sakiori weaving. Use the SAORI Fabric Cutter to cut Sakiori strips and easily weave them into your piece with this shuttle. The two pins inside the shuttle can be adjusted to the width of the cloth you are weaving. These shuttles are also useful for weaving with bulky yarns and art yarns.



Sakiori Shuttles	Length	Width	Height	Weight*
Regular	43cm/16.9"	4.6cm/1.8"	3.5cm/1.4"	185g/6.5oz
Large	55cm/21.6"	4.7cm/1.8"	4.3cm/1.7"	265g/9.3oz

*Approximate average weight as of January 2021. The actual weight of individual products may differ slightly due to the varying nature of the wooden materials used.

Accessories for Different Needs



Bobbin Winder Guide

You can wind a bobbin with only one hand assisted by this guide. This is designed to be used with a SAORI cone yarn and special bobbins appropriate for the Boat Shuttle (No Spindle) and Shuttle with Pegs. Compatible with 60 and 90 Series loom models.



Bobbins with Flanges

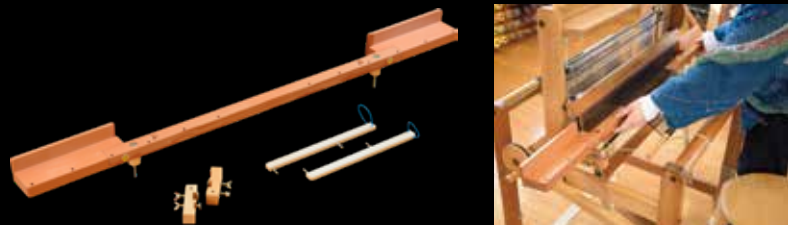
The flanges prevent the yarn from coming off at the edge of the bobbin. Compatible with all sizes of Boat Shuttles except for Small.



Winding Lever

This accessory assists a weaver who has difficulty rotating the cloth roller while weaving on a SAORI SX60/WX60/WX90.

Shuttle Shelf



This accessory is especially helpful for people who are not able to easily hold a shuttle in their hands. With the Shuttle Shelf, you can weave with just one finger or even a foot. Available only for the SAORI CH60/SX60/WX60.

Shuttle with Pegs



Designed to be used together with the Shuttle Shelf, this shuttle allows you to pass weft thread without the use of your hands by pushing the two pegs with a finger or a stick held in the mouth. It is easy to handle, with a wide slot to insert a medium-sized bobbin and a large hole to feed the thread through. This shuttle comes with a pair of stoppers specifically designed to be used with this shuttle on the Shuttle Shelf.



Beater Handle



The Beater Handle extends the beater for those who have difficulty reaching the beater while weaving. Available only for the SAORI CH60/SX60/WX60.

Shuttle Size: L 34cm x W 4.2cm (excl. Pegs) x H 3cm
Shuttle Weight: 110~130g (approx. 3.9 - 4.6 oz)



Hand Switcher and Weight

A weaver can switch the harnesses using their hands instead of feet with the Hand Switcher. Additional Weights (2 pcs) for the Hand Switcher are also available to attach to the back harness, making it even easier to switch between weaving sheds (sold separately).



Flat Pedal Beam for Wheelchair Access

Available on the SAORI CH60A-2.



There are two kinds of warping methods currently practiced in SAORI, they are the Original SAORI Warping Method and the New SAORI Warping Method. The order of the steps, how to do each step and the accessories to be used in some of the steps are different between the two methods. The Original SAORI Warping Method has a history of 50 years, and it is explained in detail in the book "SAORI: Self-Innovation through Free Weaving". The New Warping Method was released in 2014 and its detail is explained fully in the users' guides which come with the essential and optional tools for this new method. The New Warping Method is a revolutionary way of warping, which reduces the time required for warping in half compared to other conventional ways. This new warping method adds more accessibility, especially for beginners and people with different needs to create their own warp, while the original SAORI warping method has more options for design at every stage of the warping process from winding to threading. Each method offers the options to allow you to thread the warp directly on your loom or at a table.

Overview of SAORI warping methods

► Original SAORI Warping Method

Threading from front to back

Steps	Required Accessories	Optional Accessories
1. Planning for Warping	None	None
2. Winding a Warp on the Warping Frame	Warping Frame with Two Legs	Stand Attachment for Warping Frame
3. Removing the warp from the Warping Frame		
4. Sleying/Threading the Reed	Sleying Hook *1	Cross Holder Threading Holder *2
5. Threading the Heddles	Heddle Hook *1	Threading Holder *2
6. Beaming the Warp	None	None

► New SAORI Warping Method

Threading from back to front

Steps	Required Accessories	Optional Accessories
1. Planning for Warping	None	None
2. Winding a Warp on the Warping Frame	Warping Frame with Two Legs	Stand Attachment for Warping Frame
3. Removing the warp from the Warping Frame		
4. Dividing Crosses	Dividing Bar Set	Tabletop Beaming and Threading Holder *2
5. Beaming the Warp		
6. Sleying/Threading the Reed and Heddles	Heddle Hook *1	

*1: Included in the SAORI loom packages.

*2: Additional options are required depending on the loom model to be used with.



For making your own warp, there are two methods currently practiced in SAORI: the Original SAORI Warping Method and the New SAORI Warping Method (See p.27). The Original SAORI Warping method requires less investment for the warping and threading tools. The New SAORI Warping method requires more tools for making and beaming the warp, while it makes the warping process more accessible. For weavers who would like to skip the entire warping process, SAORI also offers Ready-made Warps, which you can purchase from your local SAORI Studio.

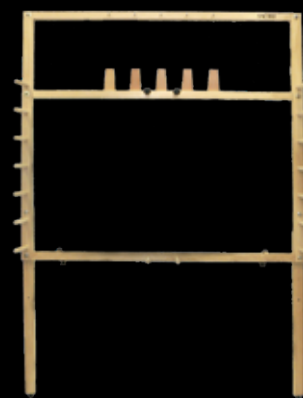
There are two ways for you to set up your own warp and the Ready-made Warp on your SAORI loom: doing it directly on the loom or at a table. Generally, beaming and threading the warp directly on the loom requires less accessories, and doing it at a table requires more accessories but adds some comfort to the process itself. Choose the best option matching your unique needs and preferences.

Required Optional Beaming and Threading Tools for SAORI Warping Methods

Warping Method	Beaming & Threading Option	60 Series	Piccolo Series	90 Series
Ready-made Warp	Directly on a Loom	None	None	None
	At a Table	Tabletop Beaming and Threading Holder	Tabletop Beaming and Threading Holder *1	Tabletop Beaming and Threading Holder
Original SAORI Warping	Directly on a Loom	None	None *2	None
	At a Table	Threading Holder	Threading Holder *1	Threading Holder
New SAORI Warping	Directly on a Loom	Dividing Bar Set	Dividing Bar Set	Dividing Bar Set
	At a Table	Dividing Bar Set	Dividing Bar Set	Dividing Bar Set
		Tabletop Beaming and Threading Holder	Tabletop Beaming and Threading Holder	Tabletop Beaming and Threading Holder *1

*1: Requires additional options for compatibility.

*2: The reed needs to be removed from the beater for sleaying.



Warping Frame with Two Legs

Max. warp length: 13.5m/14.7 yds
The Warping Frame with Legs has 5 built-in cone stands and two legs with two different height settings, which let you select a comfortable warping position. Simply lean the frame against a wall and start warping.



Stand Attachment for Warping Frame

Replace the standard legs on the Warping Frame with this attachment so that it can be free-standing. The metal brace at the bottom also allows close access for a wheelchair, and five different height settings give you flexibility to choose a comfortable position for warping. This attachment is also useful if you do not have open wall space for the standard frame.



Cross Holder

The Cross Holder holds the cross of the warp in place while you thread the reed using the original SAORI warping method.



Threading Holder for SAORI CH60 / SX60 / WX60 / WX90

Used together with the Cross Holder, this holds the reed and harnesses on a table while you thread using the original SAORI warping method.



Heddle Hook

Reed Hook



Automatic Denting Hook

This hook moves to the next dent automatically while you are threading the reed.



Dividing Bar Set

This tool enables a revolutionary warping method that allows you to create, beam and thread your own warp simply and quickly. This method of warping is an effort to simplify the warping process so that everyone can experience the joy of creating their own unique warps as part of developing a practice of SAORI. Available in two sizes for the 60 and 90 Series loom models.



Tabletop Beaming and Threading Holder

The Tabletop Beaming and Threading Holder is an accessory tool that allows you to beam and thread your own warp or thread a SAORI Ready-made Warp comfortably at a table. Using this tool puts less strain on the back and shoulders than beaming and threading directly on the loom and gives you flexibility for positioning your workspace. Use this tool with Dividing Bar Set for beaming your own warp. Can be compatible for 60, 90 and Piccolo Series looms used with the corresponding options.



Optional Accessories for the Tabletop Beaming and Threading Holder

◀ Warp Beam with Handle/Lever



The Warp Beam with Handle/Lever for the Tabletop Beaming and Threading Holder is available for beaming a warp at a table for all SAORI looms. You can beam a warp with this tool instead of taking a warp beam off a loom.

Reed Holder Blocks ▶

The Reed Holder Blocks enable you to sley the reed at a table without removing the reed cap from a loom. By using the Reed Holder Blocks and the Warp Beam with Handle/Lever you may leave a project securely on your loom while setting up a warp for another project on the Tabletop Beaming and Threading Holder.



Cone Winding Tool

You can wind yarn onto a cone by attaching this tool to the built-in or optional bobbin winder.



SAORI Art Yarn Maker

With the SAORI Art Yarn Maker, you can not only express yourself freely and easily in your weaving but also in your own one-of-a-kind art yarns. All you need is this compact and versatile accessory tool, the bobbin winder on your SAORI loom and a table, shelf or other surface of similar height to your loom.



Fabric Cutter (Sakiori Cutter)

With this cutter, you can cut many strips of fabric smoothly and quickly. It comes with a standard cartridge of blades that cut strips of 5mm width. Optional cartridges are also available with 4 different cutting widths: 4mm, 5mm, 8mm and 15mm. Use a Sakiori Shuttle to weave with the strips.



Spring System 4-Harness Attachment

This includes 1 Spring system wire kit, 4 harnesses, 6 pedals, 4 lamms, 12 tie-up cords and other necessary parts to convert your SAORI CH60 / SX60 / WX60 / WX90 into a Spring System 4 harness loom. We offer the Spring System 4-Harness Attachment as one of the supplementary tools to add ways for you to express yourself and explore color, texture and innovative clothes-making.

When you would like to explore your own creativity through plain weaving, we strongly recommend you convert the loom back to the original 2-harness loom, which was carefully designed to make an unparalleled flow of weaving possible and enjoyable for anyone regardless of age, previous experience, and physical and intellectual capability.

Our innovative Ready-made Warps minimize the often intimidating and time-consuming nature of the warping process. Regularly stocked Ready-Made Warps are available in black because contrary to the usual idea of a blank white canvas, Misao Jo learned that a black warp allows most colours to stand out and frees a weaver's mind. The longest available Ready-Made Warp has a length of 30 meters (33yds) so you can thread once and enjoy weaving a long, continuous piece or several pieces all on the same warp. All SAORI Ready-Made Warps are produced manually with attentive care.



◆ **Colour: Black**

◆ **Material: Cotton or Wool**

Cotton is more popular for its durability and stability; less possibility of breakage while weaving and less amount of shrinkage after washing. The stable nature of cotton warp enhances the appeal of the different materials used as weft. Wool is chosen for its lightness and pleasant feel resulting in dramatic shrinkage after washing. Wool warp is generally more delicate than cotton and may require more attentive care to avoid and fix breakages while weaving. Refer to the book "SAORI: Self-Innovation through Free Weaving" to learn how to avoid and fix the broken warp threads you may come across.

◆ **Number of Warp Threads:**

9 different widths, up to 450 threads

50, 100, 150, 200, 250, 300, 350, 400 and 450 threads

* 4 different widths up to 200 threads are available for a SAORI Piccolo40.

* 6 different widths up to 300 threads are available for a SAORI CH60/SX60/WX60.

* 9 different widths up to 450 threads are available for a SAORI WX90. The Ready-made Warps with 350, 400 and 450 threads are supplied as two rolls to be set side-by-side on a loom.

◆ **Warp Length:**

4 different lengths, up to 30 meters/33 yds

6m / 6.5yds, 12m / 13yds, 20m / 22yds, 30m / 33yds



To determine warp length for weaving you must allow for take-up (shrinkage in the actual weaving process), shrinkage after washing and loom waste which is the amount of yarn needed when tying onto the loom. These amounts need to be added to the desired length of the finished woven cloth. It is fairly standard for the take-up and shrinkage to add 20% and additionally the loom waste to be about 50cm. Be aware that the longer warps should be carefully maintained and broken warp threads must be repaired as soon as they are discovered so they won't interfere with your weaving process. Also add an extra 10-30% to account for take-up and shrinkage after washing when deciding the width of the warp.

Please specify the material, width and length when placing an order.

❖ Special colour Ready-made Warps are also made in limited editions as an occasional and supplemental inspiration to support long-lasting SAORI practice.





Yarn Specifically Produced for SAORI



SAORI offers high-quality cone yarn specifically designed and produced for weaving. Different from the yarn for knitting and other kinds of handcrafts, SAORI yarn doesn't go through the finishing process before distribution. In weaving, the finishing process must be done after yarn is woven into the cloth. The true value of SAORI yarn, especially the animal fibers such as wool, alpaca, camel and cashmere, become obvious only after washing. When you create wearable arts such as shawls and clothing, the washing process before sewing is critical for you to experience the deep

joy of wearing your own SAORI arts. Refer to p.p. 49-50 of this catalogue to read more about the finishing process, and enjoy the dramatic transformation of the fiber after weaving!

Concept of SAORI Yarn

► Inspiring and Fun to Use

SAORI yarn is produced specifically to be the optimum choice for SAORI. Most of our regularly stocked SAORI Classic Yarn was carefully developed to have good thickness, stability and strength to be used both as warp and weft. They come in a wide-ranging colour palette to inspire a life-long creative practice among weavers. We wind SAORI yarn on our original cones with an average volume of 160g/5.65oz, if not specified otherwise, so that the weavers can easily handle, store and distinguish the material fiber while playing intuitively with the diverse collection at hand.



► Genuine and High Quality Material

SAORI Classic Yarn is made with genuine high-quality materials carefully selected from different sources around the world. We offer each material fiber with 100% pure quality so weavers can enjoy the natural strengths that each fiber possesses.

► Diverse and Eco-friendly

We use high-quality yarn from textile factories that would otherwise be discarded because their volume is not enough for mass-production. We make careful selections out of their high-quality yarn and add more value to them by dyeing, plying and winding them into our Specialty SAORI Yarn with diverse colours and textures. Some of them are vocal in colour and texture, and this may let them be useful for occasional additions to your creative attempts both in warp and weft. Some of them are quiet and carry subtlety in design and colour, but this may let the inner creativity flow naturally out of yourself while weaving with them. Because of the nature of the production process, our Specialty SAORI Yarn has a vast variety but a very limited volume of each kind. Treasure every encounter with a Specialty SAORI yarn cone, as this may be a once-in-a-lifetime experience for you.

SAORI

Classic Yarn



We offer regularly available Classic SAORI Yarn in a wide variety of colours and textures in the following materials:

- Cotton: Extra Fine, Fine and Heavy
- Jute
- Wool
- Lambswool
- Cultivated Silk
- Linen
- Organic Cotton
- Alpaca & Camel
- Cashmere

Many of our Classic Yarn cones are suitable for use as warp and weft for many kinds of weaving. They are available for purchase as individual cones or assorted sets. When placing an order, please specify the yarn material, thickness, texture (if applicable), colour number/set name, and quantity (number of cones and/or sets). More information about each of our Classic SAORI Yarn is detailed on the following pages. The actual colour may vary slightly among individual cones of the same colour numbers. The actual yarn colours may look different from the images printed on the following pages due to various reasons.

Specialty Yarn



We also offer a limited supply of Specialty SAORI Yarn in a wide variety of colours and textures in cotton, wool, silk, rayon, acrylic, metallic and other synthetic fibers. Many of our Specialty Yarn cones are suitable for use as warp and weft for all kinds of weaving. Because of the wide variety and limited availability of each kind, we cannot offer sample images of all individual Specialty SAORI Yarn cones. They are available for purchase as randomly assorted sets in the following four material groups: Cotton, Wool, Silk and Synthetic. Specify the desired material group when placing an order. These assorted sets of Specialty SAORI Yarn are popular among curious and open-minded weavers, who appreciate the excitement of opening the package and receiving unexpected inspiration from the yarn. Some comment their creative mind was expanded by weaving with the yarn included in the set, which they would not have chosen if they picked individual cones by themselves.

* The following photos show examples only, not current availability.



We use yarns from textile factories that would otherwise be discarded to create our unique Specialty SAORI Yarn.

Classic Yarn	Characteristics
Fine Cotton	Classic Fine Cotton is available in 38 colours and has been the longtime best seller among all classic yarn. 3 single yarn threads are carefully twisted together to create a soft feel. They are suitable for use as warp and weft. We recommend Classic Fine Cotton for weaving clothes, tapestries, mats, bags, pouches etc. If you are making something to wear, wash the woven fabric before sewing and wearing.
Extra Fine Cotton	Classic Extra Fine Cotton is available in 36 colours. Different weight yarn threads are carefully twisted together to create a unique texture. The yarn is durable but very fine and soft. They are suitable for use as warp and weft. We recommend Extra Fine Cotton for weaving shawls, clothes, tapestries, mats, bags, pouches etc. If you are weaving something to wear, wash the woven fabric before sewing and wearing.
Heavy Cotton	Classic Heavy Cotton is available in 20 colours. 6 single yarn threads are carefully twisted together to create a soft feel. They are suitable for use as warp and weft. Heavy Cotton might be too thick for weaving wearable items such as shawls and clothes. We recommend Classic Heavy Cotton for weaving tapestries, mats, bags etc. If you are weaving something to wear, wash the woven fabric before sewing and wearing.
Jute	Classic Jute is available in 18 colours. Two thick single yarn threads are carefully twisted together to be suitable for hand-weaving. The weight of Classic Jute is about 3 times heavier than the popular Classic Fine Cotton. Classic Jute may be too thick and stiff to weave wearable items such as clothes and shawls. We recommend Classic Jute for weaving tapestries, mats, bags etc.
Wool	Classic Wool is available in 36 colours. This yarn is a single yarn but made durable and stable. They are suitable for use as warp and weft. If you are weaving something to wear, wash the fabric before sewing and wearing. The fiber of Classic Wool would shrink up to 20% or so after washing, but the fabric will become much softer and smoother on your skin.
Lambswool	Lambswool is made of the hair of young sheep. The fiber of lambswool is thinner than the regular sheep wool fiber. For this reason, the cloth woven with lambswool feels softer and smoother on your skin. Classic Lambswool is 2-ply yarn and available in 70 colours. Classic Lambswool was dyed before being spun into yarn. This dyeing process makes each yarn colour vivid and stable. Some of our Classic Lambswool is made of 2 single yarn threads in different colours twisted together. Classic Lambswool is suitable for use as warp and weft. We recommend Lambswool for weaving shawls and clothes. If you are weaving something to wear, wash the woven fabric before sewing and wearing. The fiber of Classic Lambswool may shrink up to 20% or so after washing, but the fabric will become much softer and smoother on your skin.

Classic Yarn	Characteristics
Cultivated Silk	Classic Cultivated Silk is made of two slub yarn threads carefully twisted together. This makes a unique random texture along the yarn. Classic Cultivated Silk is in the approximately same weight as Classic Extra Fine Cotton. Classic Cultivated Silk is available in 18 colours, and they are carefully dyed in Osaka, Japan. We recommend Classic Cultivated Silk for weaving shawls and clothes. They are suitable for use as warp and weft. If you are weaving something to wear, wash the woven fabric before sewing and wearing. The fiber of Classic Cultivated Silk may not shrink much after washing, but the fabric will turn softer and smoother on your skin.
Linen	Classic Linen is made of 3 thin single yarn threads carefully twisted together. Classic Linen is about half the weight of popular Classic Fine Cotton. The yarn is thin but durable. They are suitable for use as warp and weft. Classic Linen is available in 18 colours. All colours, except for #1 Natural, are carefully dyed in Osaka, Japan. We recommend Classic Linen for weaving shawls and clothes. If you are weaving something to wear, wash the woven fabric before sewing and wearing. The fiber of Classic Linen would not shrink much after washing, but the fabric will turn softer and smoother on your skin.
Organic Cotton	Organic Cotton is available in 3 natural colours (natural, brown and green) and 3 mud-dyed colours (gray, yellow and pink). Each colour is available in 3 different weights (1-ply straight, 3-ply straight and 3-ply boucle). 3 mud-dyed colours are carefully dyed in Japan. 1-ply straight yarns would be too thin and weak for use as warp. We recommend 1-ply straight Organic Cotton yarns for use as weft. Wind them together with other Organic Cotton yarns in the same or different weights. 3-ply straight Organic Cotton is in the same weight of popular Classic Fine Cotton. They are suitable for use as warp and weft. 3-ply boucle Organic Cotton yarns are also suitable for use as warp and weft and will add a unique texture to your weaving. The cloth woven with Organic Cotton feels softer than regular cotton fabric. We recommend Classic Organic Cotton for weaving wearable items such as shawls and clothes. If you are weaving something to wear, wash the woven fabric before sewing and wearing.



Classic Yarn	Characteristics
Alpaca & Camel	Classic Alpaca is made of hair of baby alpaca. Classic Alpaca is made of two single yarn threads carefully twisted together. It is in about the same weight of Classic Extra Fine Cotton. Classic Alpaca is available in 10 colours, carefully dyed before being spun into yarn. This dyeing process makes each yarn colour stable. Classic Camel is made of two single yarn threads carefully twisted together. Its weight is about the quarter of Classic Wool. Camel wool is not suitable for dyeing, and so Classic Camel is available in 3 natural colours only. The alpaca and camel fibers are thinner than the sheep wool fiber. For this reason, the fabric woven with Alpaca & Camel yarns feel softer and warmer than sheep wool fabric. Classic Alpaca & Camel yarns are good for warp and weft. We recommend Classic Alpaca & Camel for weaving wearable items such as shawls and clothes. If you are weaving something to wear, wash the woven fabric before sewing and wearing. Alpaca & Camel fibers need to be washed at least 4 times longer than wool fibers in order to be fully enough to have an excellent soft feel. The fiber of Classic Alpaca & Camel may shrink up to 30% or so after washing.
Cashmere	Classic Cashmere is made of two single yarn threads carefully twisted together. It is in about the same weight of Classic Extra Fine Cotton. Classic Cashmere is available in 48 colours, carefully dyed before being spun into yarn. This dyeing process makes each yarn colour vivid and stable. Cashmere wool is made of the very soft downy hair of cashmere goats. One cashmere goat can produce only 200g downy wool per year. This is 5% weight of the wool produced by one sheep in a year. Because of its rarity and the amount of work involved in collecting and processing the hair of goats, cashmere wool has the highest value among all animal hair fibers. The fabric woven with cashmere yarns feel exceptionally warm, soft and smooth on your skin. Classic Cashmere is good for warp and weft. We recommend Classic Cashmere for weaving wearable items such as shawls and clothes. If you are weaving something to wear, wash the woven fabric before sewing and wearing. Cashmere fibers need to be washed at least 4 times longer than wool fibers in order to be fully enough to have an excellent soft feel. The fiber of Classic Cashmere may shrink up to 40% or so after washing.



Q. I am new to hand-weaving. Which kind of yarn do you recommend for me to weave shawls?

If you would like to weave a warm shawl to wear in winter season, we would recommend the yarn made of animal hair fibers. We would recommend Classic Wool to start with. If you would like to choose softer and warmer fibers than sheep wool, Lambswool, Alpaca & Camel and Cashmere would be good choices. When you weave with luxury yarn such as Cashmere, we recommend that you do not mix it with other animal hair fibers so that you can maintain the excellent soft feel of cashmere fiber throughout the cloth you weave. If you are weaving with a ready-made warp, we recommend you choose a cotton or silk ready-made warp for mixing with the weft of cashmere yarn. The cotton or silk warp is less likely to spoil the excellent feel of cashmere fibers compared to the wool warp.

If you would like to weave a shawl to wear in summer season, cotton would be a good fiber to start with. Cotton fibers feel smoother on your skin compared to animal hair fibers. However, cotton fibers tend to feel heavier than animal hair fibers. For this reason, we would recommend you choose reasonably thin cotton yarns and beat the weft gently for weaving shawls. We would recommend Classic Extra Fine Cotton for you to start with. If you feel Classic Extra Fine Cotton might be too thin, we recommend you wind multiple yarn cones together onto a bobbin, rather than using the thicker Classic Fine Cotton.

Classic Extra Fine Cotton is made of 3 single yarn threads twisted together. Classic Fine Cotton is made of 6 single yarn threads twisted together. The single yarn thread used to make Classic Fine Cotton and Extra Fine Cotton is in the same weight. If you wind two Classic Extra Fine Cotton yarn cones together onto a bobbin, the total weight of the weft yarn wound on the bobbin is mathematically the same as the weight of the single Classic Fine Cotton yarn cone wound on the bobbin. However, the woven fabric will feel different between the two cases. Two Classic Extra Fine Cotton wound together onto the bobbin are not twisted with each other. This makes the woven fabric feel softer, compared to the fabric woven with the single Fine Cotton yarn wound on the bobbin.

Silk is also a popular fiber for weaving shawls. Silk fibers are lustrous and smooth on your skin. Thanks to their high ability of thermal regulation, silk fibers feel warm in winter and cool in summer. Silk fabric is more lightweight and wrinkle resistant compared to cotton fabric. Silk goes well when blended with other fibers, and so it would also be fun to mix silk together with other fibers, including cashmere.

If you are weaving a shawl, please be sure to wash the woven fabric before wearing it. SAORI yarn doesn't go through the finishing process before distribution, unlike other yarn for knitting and handicrafts. In weaving, the finishing process must be done after yarn is woven into the cloth, not only to clean the dirt added to the yarn during the production process, but also to let the fibers agitate with each other and make the cloth softer. Please refer to the washing instructions provided separately on p.p. 49-50 of this booklet and enjoy the dramatic transformation of different fibers.

Classic Fine Cotton

100% Cotton, available in 37 colours, 180g per cone, 564m/100g, 3-ply

1. Natural
2. Pink
3. Red
4. Dark Red
5. Orange
6. Yellow
7. Yellow-green
8. Green
9. Light Blue
10. Turquoise
11. Navy
12. Reddish Blue
13. Purple
14. Beige
15. Light Brown
16. Dark Brown
17. Reddish Gray
18. Gray
19. Black

20. White
21. Cherry Blossom
22. Coral
23. Peach
24. Egg
25. Tangerine
26. Vivid Green
27. Blue
28. Indigo
29. Violet
30. Iris
31. Grape
32. Light Purple
33. Mustard
34. Persimmon
35. Brown-green
36. Blue-green
37. Charcoal Gray



Fine Cotton Set A
No.2~19, 18 cones



Fine Cotton Set B
No.20~37, 18 cones

Classic Extra Fine Cotton

100% Cotton, available in 36 colours, 180g per cone, 1128m/100g, 3-ply

1. White
2. Pink
3. Tomato
4. Fire Brick
5. Orange
6. Citrine
7. Green Tea
8. Leaf Green
9. Horizon Blue
10. Saxe Blue
11. Iron Blue
12. Purple
13. Sand
14. Tan
15. Chocolate
16. Stone White
17. Smoke
18. Black

19. Pale Pink
20. Ash Pink
21. Peach
22. Sunlight
23. Baby Green
24. Ice
25. Lilac
26. Lavender
27. Rose Gray
28. Flame
29. Sunflower
30. Evergreen
31. Powder Blue
32. Steel Blue
33. Blue Violet
34. Amethyst
35. Mallow Purple
36. Red Violet



Extra Fine Cotton Set A
No.1~18, 18 cones



Extra Fine Cotton Set B
No.19~36, 18 cones

Classic Heavy Cotton

100% Cotton, available in 36 colours
180g per cone, 282m/100g, 6-ply



1. Natural
2. Pink
3. Red
4. Dark Red
5. Orange
6. Yellow
7. Yellow-green
8. Green
9. Light Blue
10. Turquoise
11. Navy
12. Reddish Blue
13. Purple
14. Beige
15. Light Brown
16. Dark Brown
17. Reddish Gray
18. Gray
19. Black



No.2~19
18 cones

Classic Jute

100% Jute, available in 18 colours
180g per cone, 211m/100g, 2-ply



1. Natural
2. Pink
3. Red
4. Orange
5. Yellow
6. Yellow-green
7. Green
8. Turquoise
9. Navy
10. Reddish Blue
11. Purple
12. Beige
13. Light Brown
14. Brown
15. Reddish Gray
16. Black
17. Grape
18. Chocolate



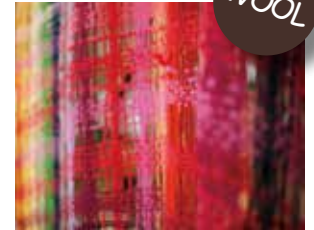
No.1~18
18 cones

Classic Wool

100% Merino Wool, available in 36 colours, 160g per cone, 300m/100g
1-ply but made specially to be strong enough to use as warp threads



1. Red
2. Scarlet
3. Orange
4. Yellow
5. Leaf Green
6. Green
7. Peacock
8. Cyan
9. Blue
10. Sapphire
11. Violet
12. Magenta
13. Apricot
14. Blond
15. Peppermint
16. Sky Blue
17. Purple
18. Pink
19. White
20. Black
21. Opal
22. Raspberry
23. Olive
24. Garnet
25. Cinnamon
26. Indigo
27. Midnight
28. Bougainvillea
29. Marigold
30. Apple Green
31. Mauve
32. Camel
33. Terracotta
34. Chocolate
35. Pansy
36. Gray



Wool Set A
No.1~18, 18 cones



Wool Set B
No.19~36, 18 cones

Classic Lambswool

100% Lambswool, available in 70 colours, 100g per cone, 1000m/100g, 2-ply



Set A

Col. No. 01~10

01 White, 02 Beige, 03 Champagne, 04 Buff, 05 Cork, 06 Hazel, 07 Topaz, 08 Camel, 09 Bronze, 10 Cocoa

Set B

Col. No. 11~20

11 Sepia, 12 Fawn, 13 Ebony, 14 Charcoal Gray, 15 Gray, 16 Pearl Gray, 17 Silver Gray, 18 Ash Gray, 19 Ivory Black, 20 Black

Set C

Col. No. 21~30

21 Purple, 22 Violet, 23 Raspberry, 24 Mulberry, 25 Viola, 26 Grape, 27 Pansy, 28 Navy Blue, 29 Prussian Blue, 30 Midnight

Set D

Col. No. 31~40

31 Zenith Blue, 32 Horizon, 33 Pale Blue, 34 Sky Blue, 35 Cerulean Blue, 36 Peacock, 37 Iron Blue, 38 Indigo, 39 Sapphire, 40 Oriental Blue



Set E

Col. No. 41~50

41 Mustard, 42 Sea Green, 43 Pea Green, 44 Evergreen, 45 Moss Green, 46 Chrome Green, 47 Spruce, 48 Marine Blue, 49 Aquamarine, 50 Duck Blue

Set F

Col. No. 51~60

51 Marigold, 52 Honey, 53 Mandarin, 54 Apricot, 55 Marron, 56 Rose, 57 Carrot, 58 Begonia, 59 Terracotta, 60 Red

Set G

Col. No. 61~70

61 Pink, 62 Fuchsia, 63 Crimson, 64 Camellia, 65 Turkey Red, 66 Cherry, 67 Bordeaux, 68 Garnet, 69 Burgundy, 70 Coffee Brown

Classic Cultivated Silk

100% Cultivated Silk, available in 18 colours
160g per cone, 719m/100g, 2-ply





Cultivated Silk Set
No.1~18
18 cones

1. White
2. Rose
3. Agate
4. Burnt Sienna
5. Amber
6. Lime
7. Leaf Green
8. Jade Green
9. Peacock
10. Sky Blue
11. Night Blue
12. Purple
13. Peony Purple
14. Ivory
15. Pigeon
16. Silver Gray
17. Smoked Bamboo
18. Japan Black

Classic Linen

100% Linen, available in 18 colours
160g per cone, 1200m/100g, 3-ply






Linen Set
No.1~18
18 cones

1. Natural
2. Opera Red
3. Maroon
4. Mandarin
5. Sea Green
6. Viridian
7. Cobalt Blue
8. Lapis Lazuli
9. Rose Madder
10. Flamingo
11. Champagne
12. Mint
13. Turquoise
14. Hyacinth
15. Orchid
16. White
17. Gray
18. Black

Classic Organic Cotton

100% Organic Cotton, 180g per cone
available in 6 natural and natural mud-dyed colors and
3 weights (1-ply Straight, 3-ply Straight and 3-ply Bouclé)






Organic Cotton Set
18 cones

1. Natural 1-Ply Straight
2. Natural 3-Ply Straight
3. Natural 3-Ply Bouclé
4. Brown 1-Ply Straight
5. Brown 3-Ply Straight
6. Brown 3-Ply Bouclé
7. Green 1-Ply Straight
8. Green 3-Ply Straight
9. Green 3-Ply Bouclé
10. Gray 1-Ply Straight
11. Gray 3-Ply Straight
12. Gray 3-Ply Bouclé
13. Yellow 1-Ply Straight
14. Yellow 3-Ply Straight
15. Yellow 3-Ply Bouclé
16. Pink 1-Ply Straight
17. Pink 3-Ply Straight
18. Pink 3-Ply Bouclé

Classic Alpaca & Camel

100% Baby Alpaca, 1000m/100g
100% Pure Camel, 1200m/100g
100g per cone, 2-ply





Alpaca & Camel Set
No.1~12, 12 cones

1. White Alpaca
2. Beige Alpaca
3. Champagne Alpaca
4. Silver Gray Alpaca
5. Ash Gray Alpaca
6. Ivory Black Alpaca
7. Black Alpaca
8. Mahogany Alpaca
9. Chocolate Alpaca
10. Cork Alpaca
11. Light Camel
12. Deep Camel

Classic Cashmere

100% Cashmere, available in 48 colours
50g per cone, 1000m/100g, 2-ply



Set A

Col. No. 01~12: 01 White, 02 Beige, 03 Pearl Gray, 04 Silver Gray, 05 Iron Blue, 06 Ivory Black, 07 Charcoal Gray, 08 Coffee Brown, 09 Lamp Black, 10 Prussian Blue, 11 Midnight, 12 Black

Set B

Col. No. 13~24: 13 Purple, 14 Lavender, 15 Baby Pink, 16 Pink, 17 Rose Pink, 18 Mauve, 19 Magenta, 20 Tomato, 21 Red, 22 Bordeaux, 23 Wine Red, 24 Violet

Set C

Col. No. 25~36: 25 Grass Green, 26 Moss Green, 27 Evergreen, 28 Olive, 29 Marineblue, 30 Navy, 31 Pansy, 32 Sapphire, 33 Peacock, 34 Cyan, 35 Sky Blue, 36 Baby Blue

Set D

Col. No. 37~48: 37 Apple Green, 38 Blond, 39 Marigold, 40 Orange, 41 Pumpkin, 42 Terracotta, 43 Carrot, 44 Cocoa, 45 Buff, 46 Sepia, 47 Topaz, 48 Cork

SAORI

How to Finish Your SAORI Cloth



SAORI yarn doesn't go through the finishing process before distribution, unlike other yarn for knitting and handicrafts. In weaving, the finishing process must be done after yarn is woven into the cloth, not only to clean the dirt added to the yarn during the production process, but also to let the fibers agitate with each other and make the cloth softer. The true value of SAORI cone yarn, especially the animal hair fibers such as wool, alpaca, camel and cashmere, are obvious only after washing. When you create wearable art such as shawls and clothing, the wash-

ing process before sewing and then wearing, is critical for you to experience the deep joy of wearing your own SAORI arts. Generally, loosely woven cloth is more prone to shrinkage than tightly woven cloth. The longer the cloth is machine washed, the more tangled its fibers become. The idea of washing the hand-woven cloth in a washing machine seems a bit scary at first, but this process is critical for adding to the appeal of the cloth. Enjoy the dramatic transformation of the fiber by washing the cloth, referring to the instructions below and on the following page. We recommend top loading washing machines for finishing hand-woven cloths, but it can be done using front loading washing machines too. Check the manufacturer's instructions that come along with your washing machine as an additional reference, because each kind has different programs. For cloth intended for interior decoration, finish the fringes of the warp threads and starch or press the cloth to shape it neatly.

1. Finish the fringes of the warp threads

Once a cloth is woven, tie the fringes of the warp threads or machine-sew the edges of the cloth two times along the weft to avoid unraveling. If the fringes are too long you can trim them.

Fringe variations



Overhand knot



Machine sewing



Braided fringe



Twisted fringe

2. Washing

Before washing the cloth, trim the threads on the edges of the weft that are too long. Do not trim the irregular selvages as they add beauty to the hand-woven quality of your cloth. Fill the washing machine with 30-40°C water and wool-washing soap. Put the cloth in the washing machine, making sure it gets evenly wet, and turn the washing machine on for about 5 minutes (more or less) to agitate it. The degree of shrinkage differs from cloth to cloth, so you should stop the washing machine at short intervals (every 2 minutes, for example) to check on the cloth. You can keep the fringes of the cloth from getting tangled with each other by tying a knot at the end of each fringe. It's also all right to make the cloth half-felted or felted if you like the soft effect of the cloth. Animal hair fibers felt and shrink well after washing. Vegetable, silk and synthetic fibers become softer after washing, but they do not shrink much. Cashmere, alpaca and camel fibers need to be washed at least 4 times longer than wool fibers in order to be fully enough to have an excellent soft feel.

3. Rinsing

Rinse the cloth in 20-30°C water for two to three minutes and spin the cloth to remove some of the water from it.

4. Pressing

Take the cloth out of the washing machine soon after it has spun and press it along the edges. Woolen fabrics can easily stretch or shrink depending on temperature and humidity. While it is wet and warm, stretch the woolen fabric to adjust its width. Once dried, the fibers will be fixed and the cloth will retain its shape.

5. Drying

Once the cloth is shaped neatly, hang it in the shade until it is dry.



◆ Hand-wash the cloth after wearing as needed, not machine wash, which is for initial finishing only.

RESOURCES



The first SAORI book was published in Japan in 1977 aiming to nourish and support the SAORI community expanding throughout Japan. As the SAORI movement and practice evolved, Misao Jo and her family worked hard to refine the content and published several updated books continually for more than 40 years.

The first SAORI book in English, "SAORI: Self-Discovery through Free Weaving", came out in 2001 as the direct translation of the original Japanese book published in 2000. This translation project began responding to the needs for resources

in English that increased after SAORI was first presented to the international audience at the 1989 VSA arts International Festival. VSA arts (currently VSA) is the international organization on arts and disability based in Washington, DC, USA. At the point of selling out this first SAORI book in English in 2012, we published a new book "SAORI: Self-Innovation through Free Weaving". For this new book, we re-translated the original writings of Misao Jo contained in the previous book and added the latest information about SAORI, some of which had not been published even in Japan at that time. "SAORI: Self-Innovation through Free Weaving" was created and designed specifically to nourish the international blooming of SAORI, which was about to explode at that time. This updated book also includes many new colour photographs for inspiration.

As the SAORI community in and beyond Japan grew, we saw the increased need for the guidance on creating SAORI clothes. Reflecting those needs, the subsequent series of books on SAORI clothing design were published. For these publications, we carefully selected the best-suited designs specifically for the audience of each book, out of more than 250 designs generously contributed by the numerous known and unknown weavers and instructors in the SAORI community in Japan. Each clothing design included in the SAORI books does not have the name of the person who created it for the first time. This is because most of the designs had been practiced and shared among the community for years and it was difficult for us to track all individual sources. The existing collection of SAORI clothing designs is the result of the courageous trials and errors made by everyone in the SAORI community throughout its history.

Similarly, many of the techniques introduced in the SAORI books came out through inspiring and being inspired one another in the SAORI community for years. All SAORI books available at this time and all contents included in them are the invaluable fruits of the collective and collaborative efforts made by Misao Jo, the entire Jo family and many others in the SAORI community. We trust the SAORI books will continue to grow as SAORI and our community continue to evolve.

For enriching and deepening your practice while continuing your own SAORI journey, we strongly encourage each one of you to continually revisit Misao Jo's original writings in the book "SAORI: Self-Innovation through Free Weaving". We believe you will hear different voices from them at different times. This will give you the seeds of continual realization and discovery, and help you to stay anchored and creative.



◆ SAORI: Self-Innovation through Free Weaving

By Misao Jo & Kenzo Jo

This book is an invaluable resource for learning about all aspects of SAORI, including its history and philosophy with translations of the founder Misao Jo's original writing as well as illustrated warping and weaving techniques. Start your own journey of self-discovery and self-innovation through SAORI.

148 pages
Published 2012

◆ Beginners' SAORI Clothing Design

By SAORINOMORI

This book contains 12 styles of clothing that you can make using only a straight line stitch and three kinds of seams. It includes step-by-step, illustrated instructions along with photos of beautiful examples of each design.

62 pages
Published 2014



◆ Intermediate SAORI Clothing Design

By SAORINOMORI

This book contains 9 styles of clothing that you can make with 7 kinds of seams. You can make bottoms, such as skirts and pants. The book includes step-by-step, illustrated instructions along with photos of beautiful examples of each design.

94 pages
Published 2017





As in weaving, we follow our core guiding principles represented by the Four Slogans of SAORI when making SAORI clothes. We encourage each one of you to be bold and adventurous while you create one-of-a-kind wearable art out of your own SAORI weaving. In SAORI clothing design, we do not use patterns like those used in western tailoring. We mostly cut the cloth straight, maintaining the precious hand-woven quality of the irregular selvages and fringes. We fold the SAORI fabric like *Origami*, or gather the parts spontaneously to make clothes. SAORI clothes created in this unconventional way drape and fit elegantly. The process of making SAORI clothes does not require proficient sewing skills. It will be enough if you can sew the parts together using a sewing machine and/or by hand-stitch. What matters most is if your weaving represents your authentic self or not.

No two SAORI weavings are identical, and so each experience of making SAORI clothes is different from any other. For this, each process embraces unique trials and errors. Even if you make mistakes or fail in the process of making clothes, don't give up. Mistakes are the seeds of discovery and realization. An endeavor of rescuing a "seemingly-failed garment" may open new possibilities for you. Look at your SAORI weaving from different angles, listen carefully to what it communicates to you, and then assist its transformation.

Each design included in the SAORI books comes with measurements to give readers some suggestions. Those measurements are offered for reference only. We encourage you to pick and choose from the information given in the SAORI books, and adapt them to create your own designs that suit you best.

For making your adventurous steps forward in the path of weaving and making your own SAORI clothes, we strongly recommend that you receive continual inspiration and guidance by joining the SAORI classes available at SAORINOMORI and other SAORI studios within the SAORI Global Network. If you do not have access to any SAORI classes, start your path with the SAORI books as the best alternative. Read carefully and follow each step illustrated in each SAORI book. Trust your intuition, and enjoy yourself wholeheartedly, once your creative adventures begin.



Through this process of making clothes, you can demonstrate your own creativity and individuality. Every work of SAORI Weaving has a unique value and cannot be compared with any other. For us, what matters most is whether the weaver's true self is expressed or not.

Misao Jo

Quoted from
"SAORI: Self-Innovation Through Free Weaving"

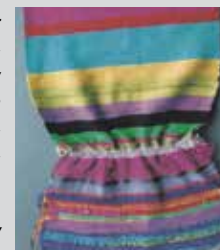


In 1981, Misao Jo and her family had the continual opportunities to visit the Osaka Prefectural Kongo Colony (it changed to Osaka Prefectural Kongo Welfare Center in 2017), located in Tondabayashi-city, Osaka, Japan. The Kongo Colony was a residential facility to support the life, cultural activities and vocational training of intellectually challenged people. There was a group of young women living and weaving together in the Kongo Colony.

On the first visit to the Kongo Colony, Misao asked the instructor assisting the group to show the pieces woven by the young weavers. Several wonderful works among those kept in the facility caught Misao's attention. Misao felt those pieces were a gift from God. Being surprised by Misao's indication, the instructor clarified that the pieces Misao pointed were the very first pieces the group of women wove in the facility. And other pieces were woven as she tried to train them to weave a conventional cloth with regular selvages and colour patterns. The instructor shared her realization in tears, that she had only been trying to bind the weavers' freedom and intrude on their natural creative capacity. Misao was deeply touched by the instructor's humility and openness.

Misao asked the instructor to gather all weavers in the room, and encouraged them to pick any colour they like and start to weave freely. And soon they started to weave inspiring pieces. On her second visit to the facility, each weaver welcomed Misao to give a hug of appreciation. The instructor followed Misao's method, and the group continued weaving with a good spirit. This experience convinced Misao that every individual had the natural power to create regardless of their capabilities. She also learned that in SAORI, it is very important for the instructors themselves to liberate themselves from the conventional way of thinking, and to be anchored to believe and respect everyone's unique potential. This memorable encounter with the instructor and the young weavers at the Kongo Colony eventually led Misao and her family to the continual adventures to collaborate with the institutions, schools and organizations working for the differently challenged people. Inspired by the continual interactions with those wonderful people, the SAORI movement and practice continued to evolve, and a variety of weaving accessories and attachments were developed one by one carefully aiming to support the SAORI Weavers with different needs. We still continue to be inspired through the going-on collaboration with the weavers in the Kongo Welfare Center, and many other organizations in and beyond Japan.

Naturally we cannot find our individuality before we remove our acquired "belongings." This step is comparable to the process of getting rid of an old house to make the land flat before building a new house. There is a huge range of processes for taking this step. Some can instantly understand the point, while others require years of effort to do so. This proves that everyone has his or her own individuality.

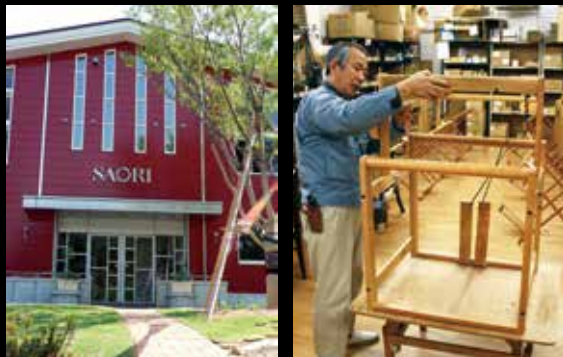


Misao Jo

Quoted from "SAORI: Self-Innovation Through Free Weaving"

SAORINOMORI / Sakaiseikisangyo Co., Ltd.

Sakaiseikisangyo Co., Ltd. was founded in 1947 by Riichiro Jo, the husband of SAORI's founder Misao Jo, and has been manufacturing SAORI looms and products since 1969. The company is still continued today by the Jo family, with its manufacturing and studio headquarters at SAORINOMORI (meaning 'SAORI forest') in Izumi, Osaka. It was in this area that Misao Jo first started SAORI.



For more than 50 years, the Jo family has worked hard to maintain the ease of use, accessibility and quality of all SAORI looms and weaving accessories to best support the long-lasting practices of SAORI by individuals and communities in Japan and all around the world. All SAORI products are made to last, designed and crafted with expertise, high-quality materials, and the utmost care in collaboration with other local, family-owned businesses in Japan and directly within the manufacturing facility at SAORINOMORI in Izumi.

Sakaiseikisangyo also welcomes everyone to experience and learn deeply about SAORI in its spacious, light-filled studio space at SAORINOMORI in Izumi, Osaka. With views on all sides of surrounding nature and cityscape, the company offers classes, hosts special events, and showcases works made by SAORI Weavers from all over Japan year-round. The studio aims to provide a relaxed and inspiring space for people to create together and generously share and learn from one another.

Sakaiseikisangyo Co., Ltd. is fortunate to currently have a team of fifteen at its headquarters in Izumi, dedicated and hard-working staff members. Special thanks also extend to the entire community of previous staff members, advocates, facilitators and all weavers within the SAORI community throughout Japan and all over the world. SAORI as a global movement would not be what it is today without all of the past and continued contributions and efforts made by everyone within the community as a whole.



SAORI Global started as the International Division of Sakaiseikisangyo Co. Ltd., the original manufacturer of SAORI looms since 1969. In March 2023, SAORI Global transformed from a division to a company, aiming to strengthen the support dedicated to nurturing the long-lasting SAORI practices continued among the weavers all around the world.



As one of SAORI organizations continued by the Jo family, SAORI Global is based at SAORINOMORI, the manufacturing and SAORI studio headquarters located in Izumi, Osaka. Having begun as a small organization made of the two members from the Jo family, SAORI Global works very closely with everyone on the team at Sakaiseikisangyo Co., Ltd. and the enthusiastic weavers among the SAORI community in and beyond Japan. Our mission, as a company and the members of the founder's family and the community, is to inspire individuals all over the world to discover, nurture and respect the endless, creative potential that lives within and connects us all. We envision an open and harmonious world, in which we may all exist, think and create differently, together.



We believe we can realize this vision by continuing the legacy of Misao Jo and the passion and integrity with which she and those working closely with her developed the movement and practice of SAORI. And so, we offer tools and resources that empower all individuals to discover their natural abilities to create, and we support facilitators and spaces dedicated to cultivating long-lasting practices of SAORI and sustaining active innovation and collaboration within communities.

At its core and within the global community it aims to support, SAORI Global values imagination, courage, openness, generosity and sincerity. We believe that SAORI has a uniquely accessible and expansive capacity to motivate individuals all around the world to challenge what they believe is possible and acceptable and to transform the way they relate to themselves and others.

Kanryoku - the power of sensibility
Calligraphy by Misao Jo

Misao Jo made up this word to emphasize the importance of believing that everyone is born with the power to create.



Join the SAORI Global community and take classes at our SAORI studio locations in Izumi and Tokyo as well as the Registered SAORI Studios located in various parts of the world. Whether you have never woven before, have told yourself that you are not 'artistic,' or have been weaving for decades, you can experience the joy and depth of expressing yourself and connecting with others through SAORI.

Registered SAORI Studios

As representatives of the original family company and community started by SAORI's founder, Misao Jo, the SAORI Global Network is comprised of studios that...

- Offer classes using SAORI looms and weaving accessories, which have been designed specifically to empower all individuals to express themselves easily and freely and are best suited for the practice of SAORI;
- Are specially trained and committed to sharing SAORI and continuing Misao Jo's legacy by providing unique spaces, tools and guidance for individuals of all abilities and previous experiences to discover and develop their true, creative selves;
- Share our company's mission and belief in SAORI's exceptionally accessible and wide-ranging capacity to build global community and create an inclusive, harmonious and inspired world.

To locate the studio nearest you, visit the SAORI Global website to see the complete directory of Registered SAORI Studios.

<https://www.saoriglobal.com>



Q. What makes SAORI classes unique and different from other free-style weaving classes?

We acknowledge that SAORI has some similarities with other free-style or free-form weaving practiced worldwide throughout the twelve-thousand-year-history of hand-weaving. However, at the same time, what SAORI encompasses is very profound and extensive, and so it seems very difficult or even impossible for us to describe only in words all the differences we feel there exists between SAORI and other free-style or free-form weaving. We would like to encourage each one of you to find your own answer through your own experiences of life-long SAORI practice.

That being said, it seems clear to us that there are some differences between SAORI and other free-style or free-form weaving. These differences originate with SAORI's core philosophy and principles. While we practice SAORI and conduct SAORI classes at SAORINOMORI and other SAORI studios, we always try to be anchored in our core belief that every individual has a unique power to create. Helping us to stay anchored in this belief, we have the guiding principles represented by the following four slogans shared among everyone in the SAORI community. We believe that following these principles in SAORI classes help us nurture a unique and safe space for liberating the hidden natural creativity possessed by each weaver.

The Four Slogans of SAORI

1. Consider the differences between a machine and human being.
2. Be bold and adventurous.
3. Look out through eyes that shine.
4. Inspire one another and everyone in the community.

SAORI classes are paired with trained SAORI instructors, unique SAORI brand equipment and tools, carefully selected weaving materials and other open-minded class participants. All of these are rooted in the core belief and philosophy represented by the Four Slogans of SAORI. For this, SAORI classes create a truly open, inclusive, inspiring and safe environment for you to begin and nurture your long-lasting creative practice made individually and together with others in the SAORI community.

Some more thoughts about the above four slogans are available on the About SAORI page in our website (www.saoriglobal.com). For enriching and deepening your practice while continuing your own SAORI journey, we strongly encourage each one of you to continually revisit the four slogans of SAORI and Misao Jo's writing in the book SAORI: Self-Innovation through Free Weaving. We believe you will hear different voices from those writings at different times, and this will give you the seeds of continual realization and discovery.

Q. I am interested in learning more about SAORI. Where can I take a class?

SAORI Classes are offered at our SAORINOMORI studio locations in Japan as well as the Registered SAORI Studios located in various parts of the world. You can see the complete directory of studios within the SAORI Global Network affiliated with Sakaiseikisangyo Co., Ltd. to locate and contact a studio near you for more information on the Classes page in our website (www.saoriglobal.com).

More questions and answers are available on the FAQ page in our website.
<https://www.saoriglobal.com>.



SAORI

G L O B A L

SAORI Global LLC

SAORINOMORI

613-1 Murodo-cho

Izumi-shi, Osaka 594-1101 Japan

info@saoriglobal.com

<https://www.saoriglobal.com>

For more information:



[saoriglobal.com](https://www.saoriglobal.com)